



→ Desarrollo rural

Agricultura, suelos y cambio climático (ST-15)

AgriClimateChange

Eduardo de Miguel, Director Gerente.
Fundación Global Nature

CONAMA2016



→ 5 entidades de 4 países

Fundación Global Nature (España), Región de Murcia (España), Lake Constance Foundation (Alemania), Solagro (Francia), Comunità Montana (Italia)

→ Duración

01/09/2010 – 31/12/2013

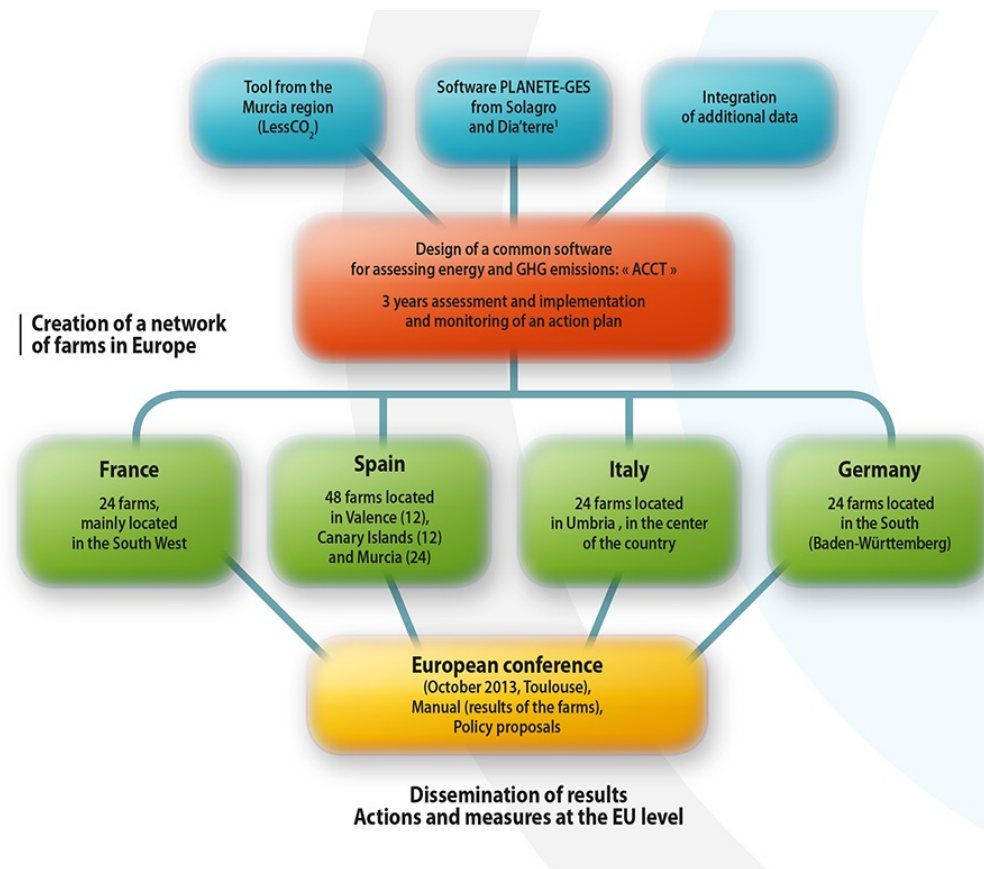
→ Localización





→ Objetivos

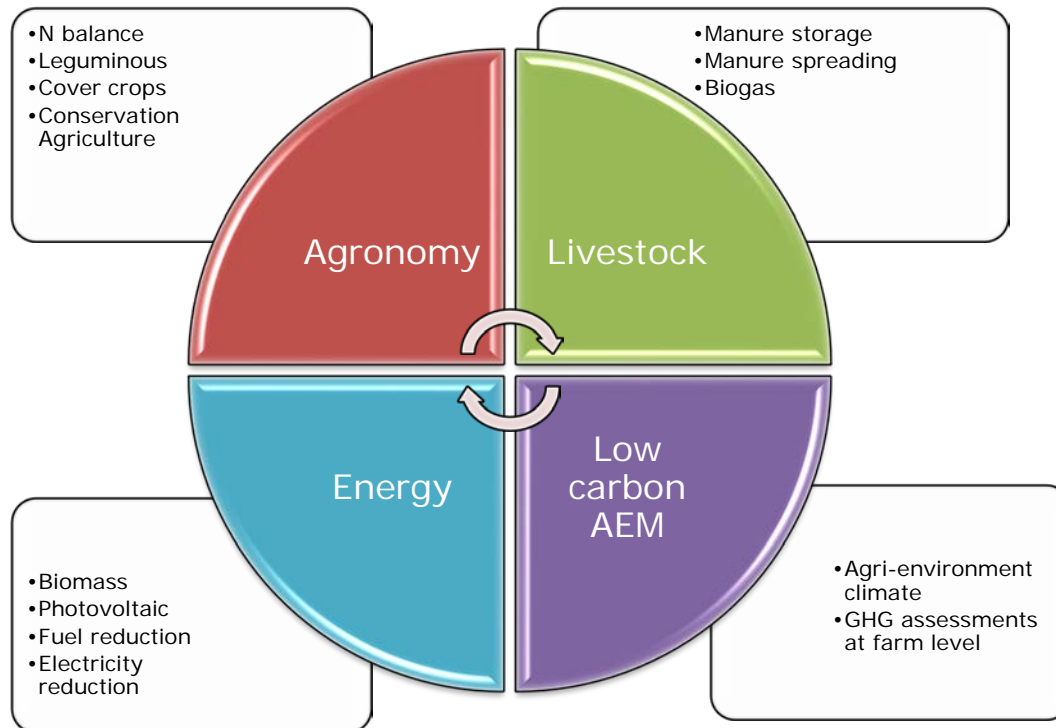
Identificar y apoyar aquellas prácticas agrarias que contribuyen a mitigar el cambio climático





→ Métodos utilizados para mitigar el cambio climático

Acompañamiento a agricultores - Elaboración de planes de acción





→ Potencial de replicabilidad

Uno de los objetivos del proyecto es la replicabilidad

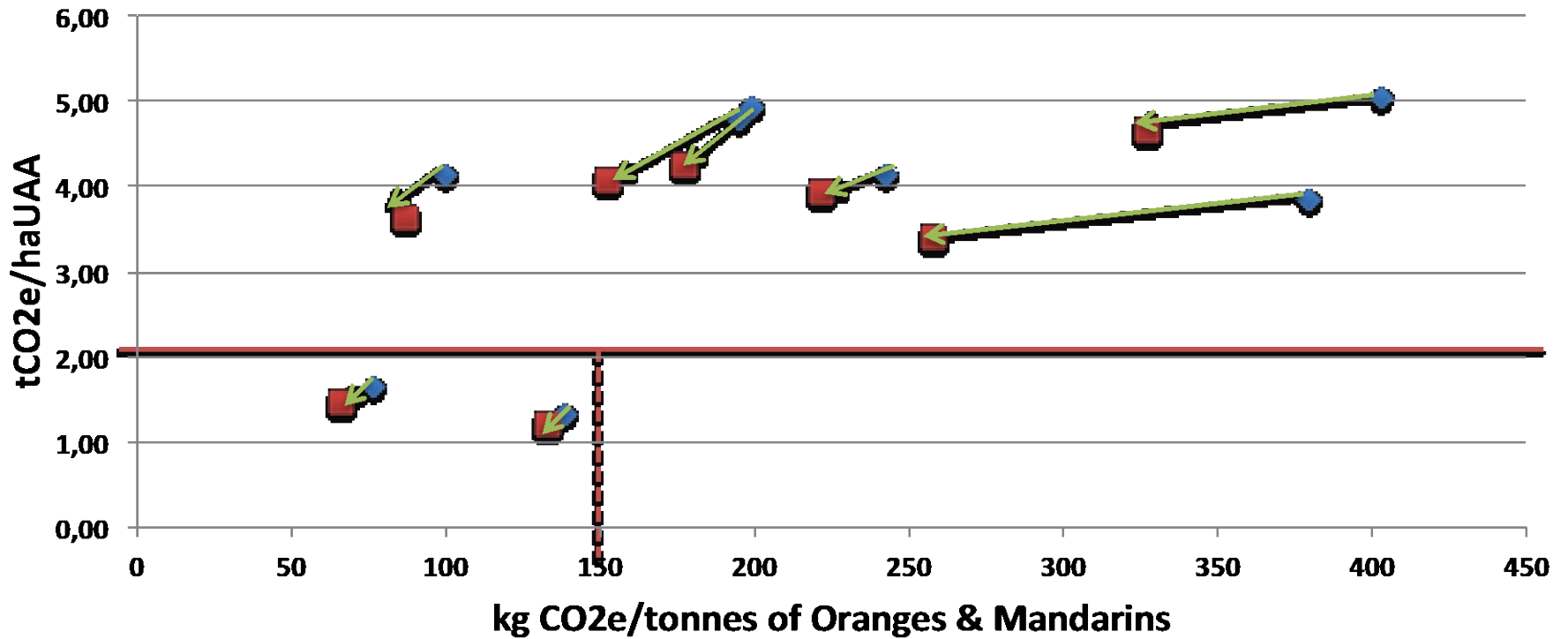
The image shows the cover of a report from the European Parliament. At the top left is the European Parliament logo. Below it, the text reads: 'DIRECTORATE-GENERAL FOR INTERNAL POLICIES', 'POLICY DEPARTMENT B', and 'STRUCTURAL AND COHESION POLICIES'. A central graphic shows a horizontal bar chart with five categories: 'Agriculture and Rural Development' (green), 'Culture and Education' (yellow), 'Fisheries' (blue), 'Regional Development' (orange), and 'Transport and Tourism' (red). The main title of the report is 'MEASURES AT FARM LEVEL TO REDUCE GREENHOUSE GAS EMISSIONS FROM EU AGRICULTURE'. At the bottom right, it says 'NOTES'. In the bottom left corner, there is a small 'EN' label and a QR code. The year '2014' is printed at the bottom center.





GHG impacts for Oranges & Mandarins

◆ 1st assessment ■ 2nd assessment





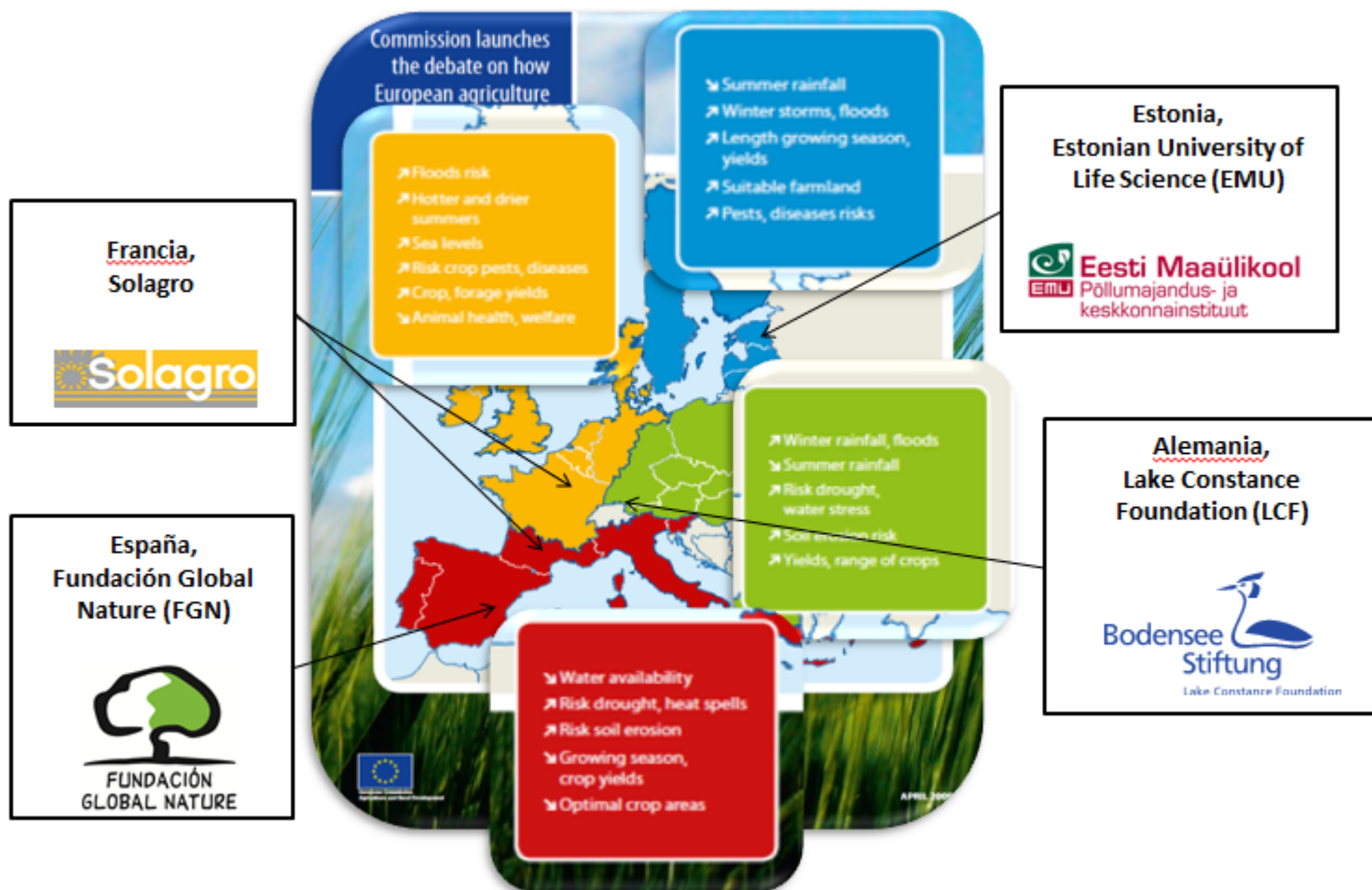
GHGE potential (MtCO ₂ e/yr)	Difficulty for farmers			
	Easy	Medium	High	Total
Neutral / negative				
Nitrogen balance	21.5			21.5
Low				
Low Carbon AEM	30.0			30.0
Electricity reduction	1.0			1.0
Fuel reduction	3.3			3.3
Leguminous on arable land		4.1		4.1
Manure spreading	1.8			1.8
Low / medium				
Cover crops		22.8		22.8
Conservation Agriculture			16.0	16.0
Medium				
Biomass for heating		1.0		1.0
Medium / high				
Manure storage	0.1			0.1
Photovoltaic installation	4.7			4.7
Biogas			60.0	60.0
Total	62.4	27.9	76.0	166.3



	Name	GHGE potential	Target	Farming system concerned	Implementation costs	Other environmental synergies	Main CAP option	Difficulty for farmers	Monitoring feasibility
Agronomic measures	Nitrogen balance	High	<50 kg N/ha	All, except, greenhouse, housed animals	Neutral / negative	ND, WFD, NEC, HD	CC	Easy	High
	Introduction of leguminous on arable land	Medium	>10% in cereals & >40% for temporary grassland	Arable land	Low / neutral	ND, WFD, HD & BD	Greening: crop diversification & EFA	Medium	Easy
	Conservation Agriculture	High	20% of the cropland	Cropland	Low / medium	Soil, WFD, HD	Greening Equivalency	High	High
	Cover crops	High	100% of the cropland Permanent crops	Cropland and permanent crops	Low / medium	ND, WFD, Soil, HD, Pesticides	CC in NVZs	Medium / high	High
Livestock measures	Manure storage	Low -	Cover slurry pit	Livestock, especially pigs & cattle	Medium / high	NEC	Cross-Compliance	Easy	Easy
	Manure spreading	Low	Liquid manure	Livestock, especially pigs & cattle	Low	NEC	Cross-Compliance	Easy	Easy
	Biogas	High +	Manure	Livestock	Medium / high	NEC	Investment	High	Easy
Energy measures	Biomass	Low	Fuel substitution	Farms with heat needs	Medium	20/20/20, HD	Investment, AEM	Medium	Easy
	Photovoltaic	Medium	On farm roofs	All farms	Medium / High	20/20/20	Investment	Easy	Easy
	Fuel reduction	Medium	10% fuel reduction	All farms	Low	20/20/20	INF, AS	Easy	Easy
	Electricity reduction	Low	5 to 30% electricity reduction	Dairy, cold rooms, irrigation, processing	Low	20/20/20	Investment	Easy	Medium
AEM	Low carbon AEM	High	Maintain and encourage farms with low level of GHG emissions	All farms over 20 ha of UAA	Low	All	Agri-Environment Climate	Easy	Easy



LIFE AgriAdapt – incrementar la resiliencia



edemiguel@fundacionglobalnature.org

www.fundacionglobalnature.org



CONAMA2016